

If you have an abnormal Pap test result, your doctor may suggest that you have a loop electrosurgical excision procedure (LEEP) as part of the evaluation or for treatment. LEEP is used to remove the area containing abnormal cells from your cervix.

This pamphlet explains

- what an abnormal Pap test result means
- how LEEP is performed
- risks of the procedure
- what to expect during your recovery
- how to stay healthy

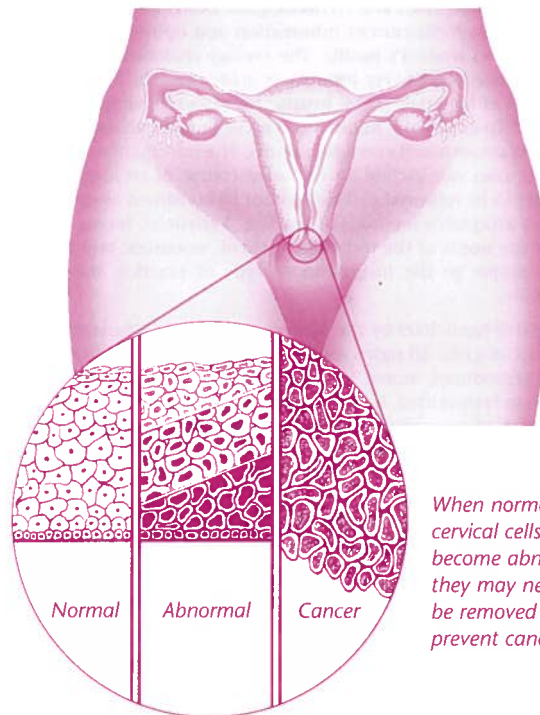
LEEP is an effective and simple way to remove abnormal cells from the cervix. It can be done comfortably in your doctor's office. Recovery time is brief in most cases.

What Is an Abnormal Pap Test Result?

The cervix is the opening of the uterus at the top of the vagina. It is covered by a thin layer of tissue. This tissue is made up of cells. As these cells develop, the cells at the bottom layer slowly move to the surface of the cervix. During this process, some cells may become abnormal or damaged. Damaged cells grow differently. In some cases, these cells need to be removed to prevent cancer.

The Pap test checks for abnormal changes in the cervical cells and allows early treatment so that they do not become cancer. If a Pap test shows these changes, the result is called abnormal. An abnormal Pap test result may mean that further testing and follow-up are needed.

The follow-up that you receive after an abnormal Pap test result depends on your age and the type of result. Results of the follow-up tests are used to decide whether further testing or treatment is needed. Your doctor will discuss all of the follow-up and treatment options with you.



When normal cervical cells become abnormal, they may need to be removed to prevent cancer.

How LEEP Is Performed

LEEP is one way to remove abnormal cells from the cervix. Other procedures are *cryosurgery*, *laser* treatment, and *cone biopsy*. The decision of which method to use depends on how much cervical tissue needs to be removed and where on the cervix the abnormal cells are located.

LEEP uses a thin wire loop that acts like a scalpel (surgical knife). An electric current is passed through the loop, which cuts away a thin layer of the cervix.

The procedure should be done when you are not having your menstrual period to give a better view of the cervix. In most cases, LEEP is done in a doctor's office. The procedure only takes a few minutes.

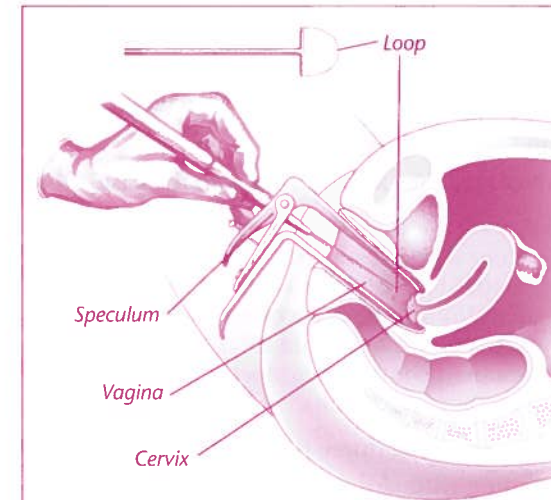
During the procedure you will lie on your back and place your legs in stirrups. The doctor then will insert a *speculum* into your vagina in the same way as for a pelvic exam. Local *anesthesia* will be used to prevent pain. It is given through a needle attached to a syringe. You may feel a slight sting, then a dull ache or cramp. The loop is inserted into the vagina to the cervix. There are different sizes and shapes of loops that can be used. You may feel faint during the procedure. If you feel faint, tell your doctor immediately.

After the procedure, a special paste may be applied to your cervix to stop any bleeding. *Electrocautery* also may be used to control bleeding. The tissue that is removed will be studied in a lab to confirm the diagnosis.

Risks

The most common risk in the first 3 weeks after a LEEP is heavy bleeding. If you have heavy bleeding, contact your doctor. You may need to have more of the paste applied to the cervix to stop it.

LEEP has been associated with an increased risk of future pregnancy problems. Although most women have no problems, there is a small increase in the risk of premature births and having a low birth weight baby. In rare cases, the cervix is narrowed after the procedure. This narrowing may cause problems with menstruation. It also may make it difficult to become pregnant.



The doctor will insert a speculum into your vagina in the same way as for a pelvic exam. The loop is inserted into the vagina to the cervix. Different sizes and shapes of loops can be used.



A close-up view of the surface of the cervix shows areas of abnormal cells.

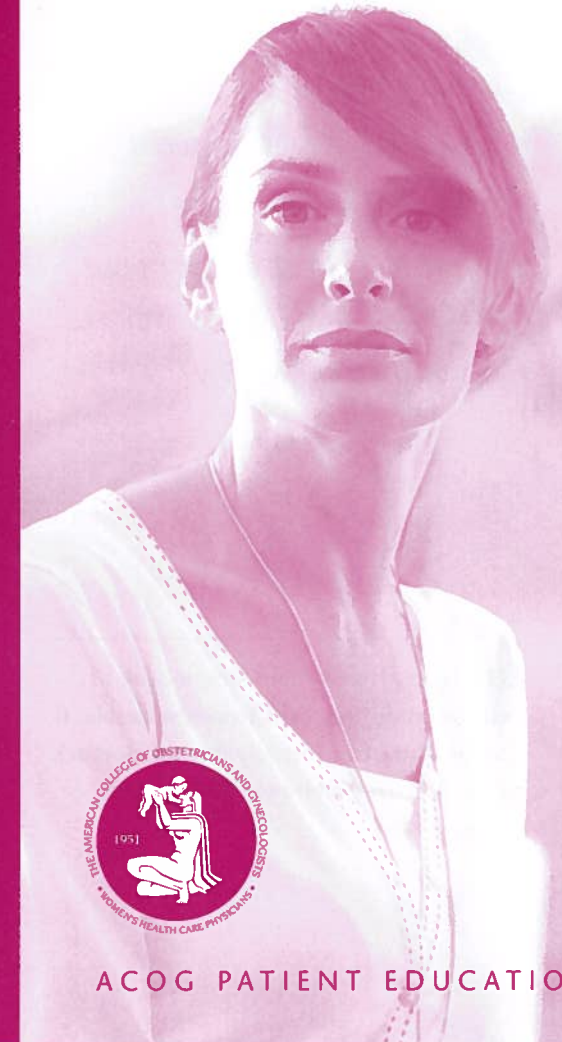


The loop is used to cut away a thin layer of the cervix.



The loop removes the abnormal tissue from the cervix.

Loop Electrosurgical Excision Procedure



ACOG PATIENT EDUCATIO

Your Recovery

After the procedure, you may have

- a watery, pinkish discharge
- mild cramping
- a brownish-black discharge (from the paste used)

It will take a few weeks for your cervix to heal. While your cervix heals, you should not place anything in the vagina, such as tampons or douches. You should not have intercourse. Your doctor will tell you when it is safe to do so.

You should contact your doctor if you have any of the following problems:

- Heavy bleeding (more than your normal period)
- Bleeding with clots
- Severe abdominal pain

Staying Healthy

After the procedure, you will need to see your doctor for follow-up visits. You will have Pap tests to be sure that all of the abnormal cells are gone and that they have not returned. In most cases, your doctor will suggest that you have a Pap test every 6 months until you have 3 normal results. If you have another abnormal Pap test result, you may need more treatment.

You can help protect the health of your cervix by following these guidelines:

- Have regular pelvic exams and Pap tests.
- Stop smoking—smoking increases your risk of cancer of the cervix.
- Limit your number of sexual partners and use condoms to reduce your risk of *sexually transmitted diseases*.

Finally...

LEEP is an effective and simple way to remove abnormal cells from the cervix. The procedure can be done comfortably in your doctor's office. Recovery time is brief in most cases. Like all procedures, LEEP carries some risks, including those related to future pregnancy. It is important to understand all of the risks, as well as the benefits, before having the procedure.

Glossary

Anesthesia: Relief of pain by loss of sensation.

Cervix: The opening of the uterus at the top of the vagina.

Cone Biopsy: Surgical removal of a cone-shaped wedge of cervical tissue.

Cryosurgery: A freezing technique used to destroy diseased tissue; also known as "cold cautery."

Electrocautery: A procedure in which an instrument works with electric current to destroy tissue.

Laser: A small, intense beam of light used as a surgical tool.

Sexually Transmitted Disease: A disease that is spread by sexual contact, including chlamydial infection, gonorrhea, human papillomavirus infection, herpes, syphilis, and infection with human immunodeficiency virus (HIV, the cause of acquired immunodeficiency syndrome [AIDS]).

Speculum: An instrument used to hold apart the walls of the vagina so that the cervix can be seen.

This Patient Education Pamphlet was developed by the American College of Obstetricians and Gynecologists. Designed as an aid to patients, it sets forth current information and opinions on subjects related to women's health. The average readability level of the series, based on the Fry formula, is grade 6–8. The Suitability Assessment of Materials (SAM) instrument rates the pamphlets as "superior." To ensure the information is current and accurate, the pamphlets are reviewed every 18 months. The information in this pamphlet does not dictate an exclusive course of treatment or procedure to be followed and should not be construed as excluding other acceptable methods of practice. Variations, taking into account the needs of the individual patient, resources, and limitations unique to the institution or type of practice, may be appropriate.

Copyright © April 2009 by the American College of Obstetricians and Gynecologists. All rights reserved. No part of this publication may be reproduced, stored in a retrieval system, posted on the Internet, or transmitted, in any form or by any means, electronic, mechanical, photocopying, recording, or otherwise, without prior written permission from the publisher.

ISSN 1074-8601

Requests for authorization to make photocopies should be directed to the Copyright Clearance Center, 222 Rosewood Drive, Danvers, MA 01923.

To reorder Patient Education Pamphlets in packs of 50, please call 800-762-2264 or order online at sales.acog.org.

The American College of Obstetricians and Gynecologists
409 12th Street, SW
PO Box 96920
Washington, DC 20090-6920
12345/32109